

## **SEED Files**

Please use the seed files located in the workspaces

For ORD 10.12 on the C: drive: C:\NCDOT\_CONNECT\_WORKSPACE\Configuration\_10\_12\Organization-Civil\NCDOT\Seed

Projectwise: Documents\Administration\Bentley\Configuration\_10\_12\Organization-Civil\NCDOT\Seed

Don't use a copy. Especially for Drainage and Utility files. D&U files "pair" with a StormCad file that is hidden. If you make a copy of an existing D&U file, that pairing will affect your new work. The D&U files also create a 3D model.

Can you do it with a ditch or label file? Yes, but the seed files are regularly updated for enhancements or corrections. Starting with a clean file is just better.

Don't be lazy....use the seed file to create a new file.

## **Making a Copy of an Existing D&U DRN**

When you begin placing nodes in a D&U DRN file, a StormCad file is also created and "paired" with it. As a side note, the StormCad file is saved in a local directory.

As a result, if you need to make a copy of a D&U DRN file, please open the file and then use **SAVE AS** instead of making a copy in Projectwise or the server. This will make sure that the StormCad file is correctly associated with the DRN file.

## **File Management**

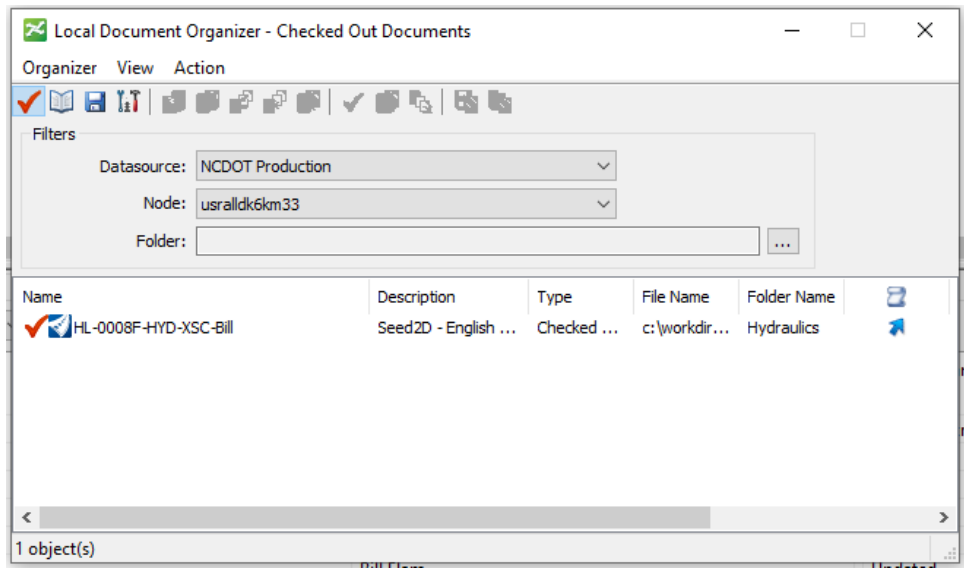
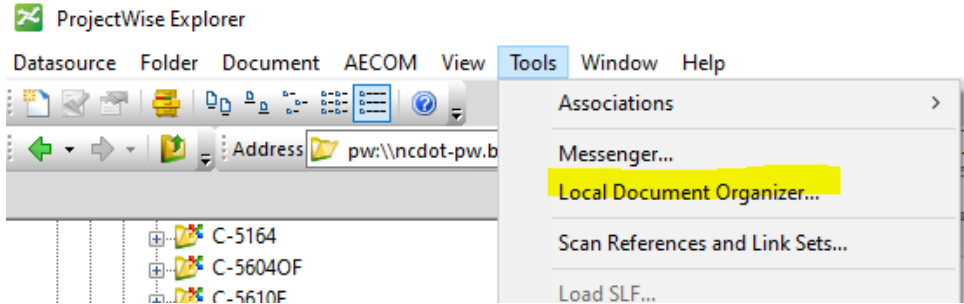
Based on discussion at the 2023 NCLUG Summer Conference, It is better to break up the old big files into smaller files that are referenced into container files. S

Terrains: You will have a complex terrain that will keep your associations between nodes and features (that help determine elevations) and the proposed terrain. The user would reference the existing terrain from L&S, the LIDAR data, and proposed terrain. So, in this case we have 4 files, but one is L&S.

For the project: We would have D&U files for crest to crest if possible. Probably try to keep it under 50 nodes and pipes, but we can get a better number on that. You will have a ditch file if necessary.....maybe we have one for each drn. We believe that we will need separate ditch files for special ditches that Roadway will have to incorporate and lateral and head/tail ditches that Roadway will most likely just reference. Then it seems that we will have a file for labels. Maybe that could also be the container file that lives in the DRAINAGE folder and Roadway has write access to. Everything else could live in the Hydro/cadd folder and be protected.

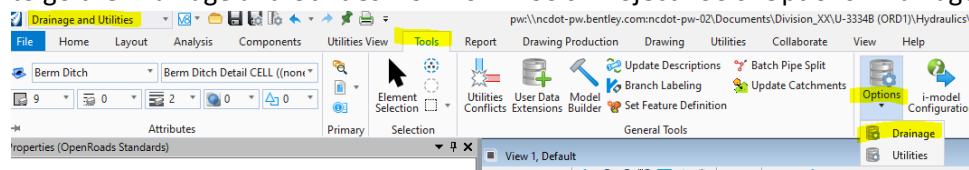
## **ProjectWise**

If you are doing “Sheeting” in PW....if you are creating plan sheets or cross sections, it is a good practice to check the Local Document Organizer located under Tools when you are done for the day. Make sure to “Check In” all the files. Sometimes, the PPL file that Roadway uses gets checked out or if you write to the sheet index, it locks a Roadway file.



### Units are Wrong

Every now and then you go into a D&U file and the station units are in inches instead of feet. The fix is to go the Drainage and Utilities workflow>Tools>Project Tools>Options>Drainage



In the table, go to Units and then look for Station. Change the inches to feet.

Options

Global Hydraulic Model Drawing **Units**

Save As... Load... Reset Defaults

Default Unit System for New Hydraulic Model US Customary

	Label	Unit	Display Precision	Format
52	Pressure	psi	0	Number
53	Rainfall Intensity	in/h	3	Number
54	Ratio		3	Number
55	Reaction Rate	/day	1	Number
56	Relative Flow Change		7	Number
57	Rotational Frequency	rpm	0	Number
58	Roughness - Darcy Weisbach	ft	4	Number
59	Roughness - Hazen Williams		1	Number
60	Roughness - Kutters		3	Number
61	Roughness - Mannings		3	Number
62	SCADA Value		2	Number
63	Slope	ft/ft	3	Number
64	Slope - Side	H:V	1	Number
65	Small Coefficient		3	Scientific
66	Snow Melt Coefficient	in/h/F	3	Number
67	Specific Gravity		3	Number
68	Station	ft	0	Fixed Point
69	Stress	lbs/ft <sup>2</sup>	3	Number
70	Tank Volume	MG	2	Number
71	Temperature	F	1	Number
72	Time - Extended	min	3	Number
73	Time - Flow	min	3	Number
74	Time - Loss	min	3	Number

OK Cancel Help